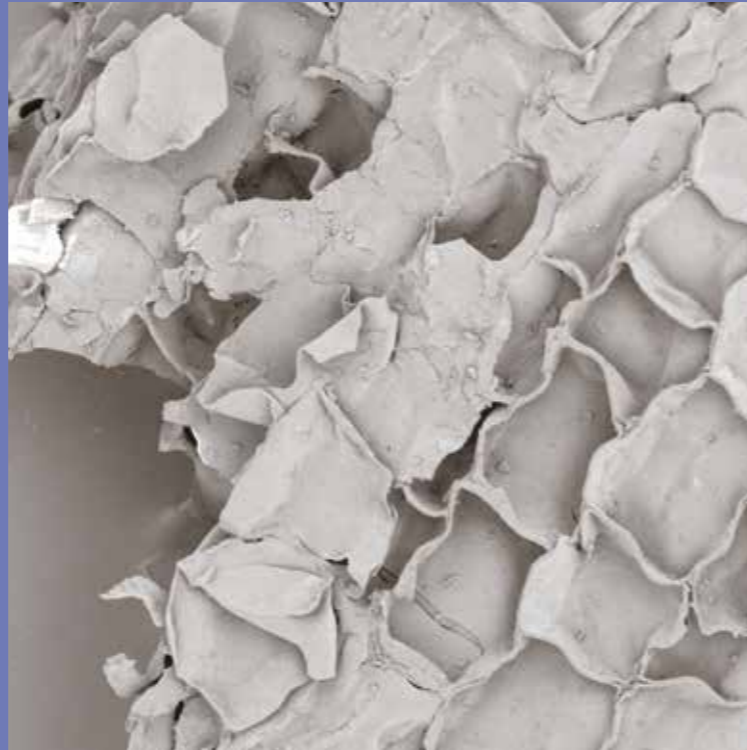


# The project

**Technology transfer from Key enabling technologies (KET) to real market applications** in creative industries related with the habitat industry in the SUDOE space.

The KrEaTive habitat Project promotes the **joint investigation** applied to the different materials that integrate the **architectural Habitat Sector** through the proximity, adapting and validating KET.

Through these technologies, the **technical response of the materials** is improved and includes **new characteristics** that have never been seen before in these materials, allowing them to be more appealing used in Architecture, design and in general in creative industries.



## Key enabling technologies

KET technologies favour innovation in processes, assets and services and have the potential to change the entire economic system.

The project group is working three KET technologies:

- nanotechnology
- biotechnology
- advanced materials

## Community

The Kreative Habitat community is a web network covering all agents involved on the value chain of the industry materials of the habitat inside the SUDOE space such as companies, producers, distributors, end users, professionals of the creative industries, investigation and innovation centres, universities, technologic centres, among others.

Registration and more information at:

<http://cms.kreativehabitat.eu>



## Materials

Three materials were selected and on those KET were applied in order to develop new and improved materials with higher performances and features.

Composite materials (Polymer and Ceramic);

Cork;

Natural stone such as granite, marble and slate.

## Partners



Technological Centre CTC (Spain), coordinator and developer of technology in the field of organic base nanocoating for protection of habitat materials against weathering.



Universite La Rochelle (France), vast experience in civil engineering and processes, also relies on biomaterials work for the development of cellulosic materials or starch. Responsible for adapting and validating the developments.

## Associated Partners



Automotive Technology Centre of Galicia (Spain), private, non-profit R&D technology centre, with high expertise in development of smart material technologies.



University of Minho (Portugal), 3B's Research Group - Biomaterials, Biodegradables and Biomimetics - has a long experience on the development of biodegradable polymers and ceramics, cork-based materials and composites for Biotechnology and Habitat applications.



Materials investigation group (Spain), development of reinforced thermoplastics resistant to abrasion and fire, with reinforced coatings resistant to metals' corrosion.



IrRADIARE (Portugal), work focus on development, innovation and integration of projects in key sectors (energy efficiency, climate, environment, industry, among others). Project communication, dissemination, web development and social media.



[www.kreativehabitat.eu](http://www.kreativehabitat.eu)

[www.interreg-sudoe.eu](http://www.interreg-sudoe.eu)

The Interreg Sudoe Programme is funded by the European Regional Development Fund (ERDF)

Interreg  
Sudoe



KREATIVE HABITAT

KrEaTive  
Habitat



/KreativeHabitat